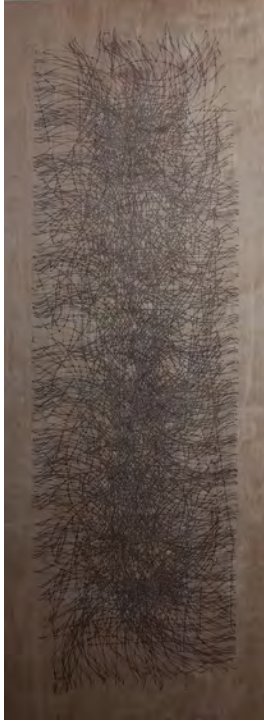




Silver Star, ink on Alupoly panel, 48"x96", 2019, \$7,500



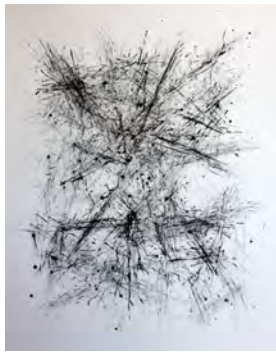
Isotope #6, ink on wood panel, 28"x80", 2016, \$6,500



Subdivision #4, ink on Alupoly panel, 48"x72", 2018, \$4,500



Stratosphere #1, ink on paper, 40"x51", 2018, \$3,500



Stratosphere #2, ink on paper, 40"x51", 2018, \$3,500



Confluence #1, ink, blown ink and collaged vintage USGS maps of California on paper, 40"x51", 2018, \$3,500



Embryo #30, ink, blown ink and collaged vintage USGS maps of California on paper, 48"x72", 2016, \$4,500



Interphase #1, ink on wood panel, 48"x48", 2019, \$4,500



Interphase #2, ink on wood panel, 48"x48", 2019, \$4,500



Paradigm Shift #1, ink, blown ink on Alupoly panel, 24"x48", 2019, \$2,250



Paradigm Shift #2, ink, blown ink on Alupoly panel, 24"x48", 2019, \$2,250



Paradigm Shift #3 & 4, ink, blown ink on Alupoly panel, 24"x48", 2019, \$2,250 each



Paradigm Shift #5 & 6, ink, blown ink on wood panels, 24"x48", 2019, \$2,250 each



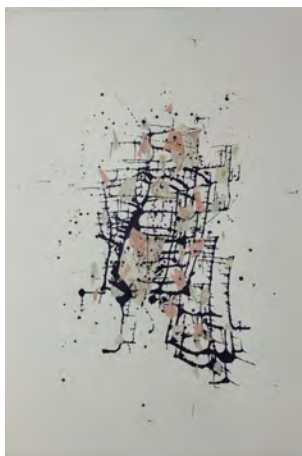
Isotope #7, ink on wood panel, 42"x48", 2015, \$4,500



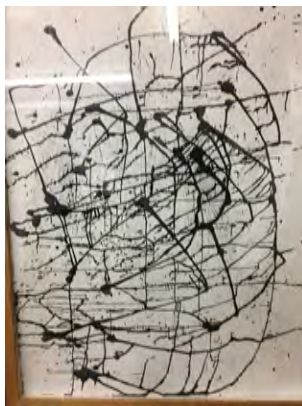
Assisted Drawing #8, ink on wood panel, 48"x48", 2018, \$4,500



Assisted Drawing #9, ink on wood panel, 48"x48", 2020, \$4,500



Collision #4, ink, blown ink and collaged vintage USGS maps of California on wood panel, 22"x30", 2019, \$1,500



Argonaut #21, ink, blown ink on paper 22"x30", 2019, \$1,500



Scaffold #1, ink on wood panel, 18"x24", 2019, \$1,000



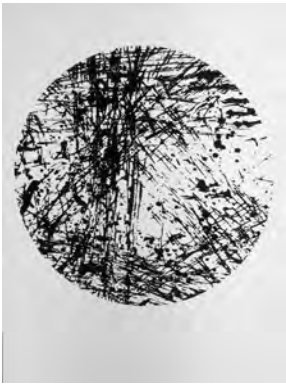
Alterspace #1, ink on wood panel, 16"x16", 2019, \$800



Stratosphere #1, ink on paper, 40"x51", 2018, \$3,500



Supersymmetry #2, screen print on paper, 11"x15", edition of 25, 2019, \$250



Supersymmetry #3, screen print on paper, 11"x15", edition of 25, 2019, \$250



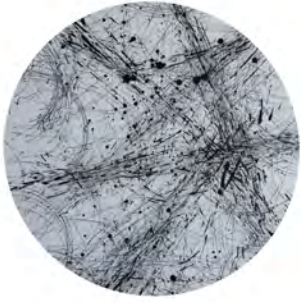
Supersymmetry #4, screen print on paper, 11"x15", edition of 25, 2019, \$250



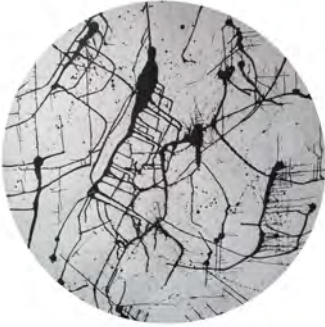
Supersymmetry #5, screen print on paper, 11"x15", edition of 25, 2019, \$250



Supersymmetry #6, screen print on paper, 11"x15", edition of 25, 2019, \$250



Supersymmetry #7, screen print on paper, 11"x15", edition of 25, 2019, \$250



Supersymmetry #8, screen print on paper, 11"x15", edition of 25, 2019, \$250



Supersymmetry #9, screen print on paper, 11"x15", edition of 25, 2019, \$250



Petroglyph #1, ink and blown ink on textured composite panel, 18"x18", 2018, \$850



Petroglyph #2, ink and blown ink on textured composite panel, 18"x18", 2018, \$850



Petroglyph #3, ink and blown ink on textured composite panel, 18"x18", 2018, \$850



Centrifuge 2, ink, blown ink on paper 22"x30", 2019, \$1,500



Doomsday Machine #2, ink, blown ink and collaged vintage USGS maps on paper 22"x30", 2019, \$1,500



Doomsday Machine #2, ink, blown ink and collaged vintage USGS maps on paper 22"x30", 2019, \$1,500



Refrain #1, ink on wood panel, 18"x24", 2019, \$1,000



Refrain #2, ink on wood panel, 18"x24", 2019, \$1,000



Isotope #21, ink on wood panel, 18"x24", 2019, \$1,000



Isotope #8, ink on wood panel, 18"x24", 2019, \$1,000



Assisted Drawing #4, ink on paper, 58"x41", 2014, \$3,500



Refraction #21, ink, blown ink and collaged vintage USGS maps of California on paper 13"x19", 2020, \$750



Synergy #1, ink on wood panel, 48"x48", 2020, \$4,500



Refraction #111, ink, blown ink and collaged vintage USGS maps of California on paper 13"x19", 2020, \$750



Spectacle #2, ink and collage on wood panel, 48"x48", 2020, \$4,500



Play Time, ink and paint on wood panel, 48"x48", 2020, \$4,500



Spectacle #1, ink and collage on wood panel, 48"x48", 2020, \$4,500